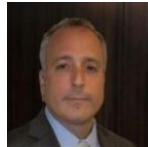




CATEGORY LIST

APPRAISAL AND VALUATION SERVICES



Neil Axler, MRICS
Managing Director



Robert J. Meulmeester
Director



475 partners, 4,700 colleagues, 78.7% percent lifetime average satisfaction rating



Strategic Partner

ARCHITECTURAL SERVICES
Interior Design, Master Planning



Marc B. Spector
Owner & CEO

**IREON Executive Committee Member*



*60+ years of global experience
Servicing 3000+ projects throughout 5 continents
225+ Design Awards*

BANKRUPTCY LAW PRACTICE



Howard Magaliff
Partner



Jeffrey Rich
Partner



Taylor Haga
Associate





Melissa Waren
Co-Founder
Chief Marketing Officer



*Founded in 2008 with
Over 500+ Transaction Closed aggregating
3 Billion Dollars Sales in Brooklyn
Ranked as Top 10 Brooklyn Commercial
Brokerage Firm by CoStar*



Matthew Cosentino
Executive Vice President
Partner



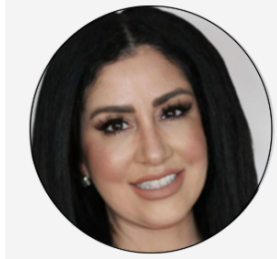
Aden Verdun
Associate
Investment Sales

**BROOKLYN INVESTMENT REAL
ESTATE BROKERAGE**



Strategic Partner

**BUILDING CODE
ENFORCEMENT & EXPEDITING**



Wanda Nazar
Founder & CEO



**BUSINESS LITIGATION &
DISPUTE RESOLUTION**



Stephen Brosky
Partner











<p>CERTIFIED PUBLIC ACCOUNTANTS AND ADVISORS</p>	 	<p>Richard Levychin <i>Partner</i></p> <p><i>*IREON Executive Committee Member</i></p> <p>Magda V. Reyes <i>Director</i></p>	 <p><i>100+ employees</i> <i>Offices in New York City, Chicago, New Jersey, Florida, and in the Philippines</i></p>
<p>CLEANING & FACILITY MAINTENANCE SERVICES (Commercial & Industrial)</p>	  	<p>Nargiza Rakhmonova <i>Chief Financial & Operating Officer</i></p> <p>Kurt Breckheimer <i>Vice President & Business Development</i></p> <p>Owen O'Mahony <i>Senior Vice President</i></p>	
<p>CONSTRUCTION- <i>Commercial & Residential General Contractor Construction Management Ground-Up Development (7 stories or less)</i></p>		<p>Alex Lipsky <i>Principal</i></p> <p><i>*IREON Executive Committee Member</i></p>	 <p><i>Three Generations of Building New York</i></p> <p><i>Servicing Long Island, Queens, Brooklyn, Staten Island, & The Bronx</i></p>

<p>CONSTRUCTION LAW PRACTICE</p>	 	<p>Stuart Zisholtz <i>Partner</i></p> <p>Richard Zisholtz <i>Partner</i></p>	 <p><i>Over 60 years of Leadership in construction law through our representation of owners, developers, general contractors, sureties, subcontractors, suppliers, manufacturers, and design professionals.</i></p>
<p>ELECTRICAL CONTRACTOR</p>		<p>Peter Campisi <i>President</i></p>	 <p><i>Founded in 1985</i></p>
<p>ELEVATOR MAINTENANCE, MODERNIZATION & SERVICE</p>	 	<p>Donald Gelestino <i>Chairman of the Board</i> <i>Founder</i> <i>*IREON Executive</i> <i>Committee Member</i></p> <p>Stirling Collins <i>President Business</i> <i>Development</i></p>	 <p><i>38 years of experience</i> <i>Serving NYC 5 Boroughs</i> <i>Nassau & Suffolk Counties, Westchester,</i> <i>Hudson Valley, NJ & CT</i> <i>Rapidly expanding geographic reach</i></p>
<p>ESCALATOR CLEANING SERVICES</p>		<p>Richard Helfman <i>Senior Vice President</i></p>	<p>THE ESCALATOR CLEANING COMPANY</p>

<p>ENVIRONMENTAL TESTING AND CONSULTING</p>	 	<p>Michael Villacres <i>Principal</i></p> <p>Richard Massari <i>Principal</i></p>	<p>H.A. Bader Consultants, Inc.</p> <p><i>Servicing NYC, Westchester, Long Island, and New Jersey for over 30 years</i></p>
<p>FINANCING – COMMERCIAL REAL ESTATE / MERGERS & ACQUISITIONS</p> <p>FINANCING – LONG TERM DEBT & EQUITY FINANCING/ BRIDGE LOANS/SHORT TERM INTERIM</p>		<p>Steve Lifton <i>Managing Director</i></p>  <p><i>Strategic Partner</i></p>	 <p><i>Customized solutions for debt and equity capital raises \$25 million to \$5 billion.</i></p>
<p>FINANCING - CRYPTOCURRENCY/ BLOCKCHAIN</p>  <p><i>Strategic Partners</i></p>		<p>Alex Davis <i>Founder – Mavryk Finance</i> <i>Chief Innovation Officer – Tezos Israel</i></p>	
<p>FIRE SPRINKLER SYSTEMS & LIFE SAFETY PROTECTION SERVICES</p>	 	<p>Craig Shapiro <i>Director of Business Development</i></p> <p>Heather Tyne <i>Sales Consultant</i></p>	 <p><i>Since 1999, Serving Hundreds Corporate and Municipal Clients Nationwide</i></p>

<p>FLOORING CONTRACTOR</p>	  	<p>Roy Cohen <i>President</i></p> <p>Nick Cohen <i>Sales Executive</i></p> <p>Marc Cohen <i>Sales Executive</i></p>	 <p>100yrs of experience in the flooring industry for generations.</p>
<p>FRACTIONAL CFO SERVICES</p>		<p>Magda Reyes <i>Managing Partner</i></p>	
<p>GLASS, WINDOWS & DOOR SUPPLIERS: INTERIOR & EXTERIOR</p>		<p>Erick Erickson <i>President</i></p>	

<p>HOISTING & SCAFFOLDING SERVICES</p>	 	<p>Pablo Perrone <i>President</i></p> <p>Joseph Besada <i>Senior Vice President</i></p>	
<p>HVAC CONTRACTOR <i>Commercial and Residential</i></p>	 	<p>Jimmy Moyon <i>Principal</i></p> <p>Rodrigo Flores <i>Senior Project Manager & Estimator</i></p>	<p>FIRST CHOICE MECHANICAL, INC.</p> <p><i>Founded in 2001</i> <i>MBE Certified</i> <i>HVAC Installation</i> <i>HVAC Service & Maintenance</i> <i>HVAC Energy Efficiency & Sustainability Programs</i> <i>Service Manhattan, Bronx, Queens, Brooklyn & Long Island</i></p>
<p>INSURANCE PROVIDER <i>Commercial & Personal</i></p>	 	<p>Jeff Rubin <i>Executive Vice President</i> <i>Healthcare and Client Advisory</i> <i>*IREON Executive Committee Member</i></p> <p>Ken Eisman <i>Vice President</i></p>	 <p>HUB International</p> <p><i>5th largest insurance broker in the world</i> <i>2 Million clients around the globe.</i> <i>500+ offices across North America</i> <i>18,000 employees throughout North America</i> <i>200 thousands multi-family units and 30,000 building multi-family's nationwide</i></p>

<p>INVENTORY TRACKING TECHNOLOGY</p>		<p>Regis Medrano <i>President - IT division</i></p>	 <p><i>Servicing the U.S., Nationwide</i></p>
<p>JANITORIAL SUPPLIES</p>		<p>Alex Guttman <i>Managing Partner</i></p>	<p>ACE JANITORIAL LLC MEDAMA SOLUTIONS</p> <p><i>Servicing the U.S., Nationwide</i></p>
<p>LED LIGHT PANELS</p>		<p>Kevin Krohner <i>CEO</i></p>	 <p>GLOBAL REACH, SUSTAINABLE, & ECO-FRIENDLY PRODUCTS</p>
<p>LIGHTING, SHADING AND AV SYSTEMS <i>-Commercial and Residential</i></p>		<p>Alon Biran <i>Principal Owner</i></p>	<p>THEAUTOM8GROUP.COM</p>
<p>LOW VOLTAGE & SECURITY SYSTEM INTEGRATION</p>	 	<p>Yossi Weinberger <i>President</i></p> <p>Yanki Schmidt <i>Vice President</i></p>	 <p>SECURE • WIRE • INTEGRATE</p>

<p>MANAGED TECHNOLOGY SERVICES</p> <ul style="list-style-type: none"> - IT Cybersecurity -Business Applications and Data Analytics -Managed Print 	 	<p>Adam Weiss <i>President</i></p> <p>Nicole Garcia <i>Strategic Partnership Development Leader</i></p>	 <p><i>Managed Service Provider helping over 20,000 organizations improve productivity and reduce costs with office technology solutions and IT support.</i></p>
<p>MEDICAL AND HEALTHCARE SUPPLIES</p>	 	<p>Vikas Singh <i>Partner</i></p> <p>Raunak Dhall <i>CEO</i></p>	 <p><i>Distributors of healthcare products with offices in Long Island, NY and Miami, FL and New Delhi, India. Offers best prices for high-quality products.</i></p>
<p>NATIONAL DEMOLITION AND EMERGENCY RESPONSE SERVICES</p>		<p>Don Adler <i>Project Manager</i></p>	 <p><i>Nationwide Presence, Licensed in all 50 states.</i></p> <p><i>Over \$5 billion of projects successfully completed since 1986</i></p> <p><i>#1 Demolition & Wrecking Contractor in the USA. (ENR-2020)</i></p> <p><i>Over \$700 million annual revenue</i></p>

NATIONAL RESIDENTIAL
BROKERAGE

SPECIALIZING IN BROOKLYN



Strategic Partner



James Fierro
*Licensed Real Estate
Salesperson*



Ermina Koutavas
*Licensed Real Estate
Salesperson*

FIERRO & CO.
@COMPASS

*96 markets, 400 offices, 33,000 plus
agents*

NATIONAL RESIDENTIAL
BROKERAGE

SPECIALIZING IN LONG ISLAND



Strategic Partner



Chris Galluzzo
*Licensed Real Estate
Salesperson*



Elena Galluzzo
*Licensed Real Estate
Salesperson*



Christo Galluzzo
*Licensed Real Estate
Salesperson*



*96 markets, 400 offices, 33,000 plus
agents
500 homes sold and \$400 Million in
Sales.*

NATIONAL STAFFING &
RECRUITMENT



Nick Sillaro
Chief Operating Officer



*National business reach
46 states serviced
5500+ clients*

<p>NATIONWIDE OFFICE FURNITURE LIQUIDATION AND NEW & PRE-OWNED FURNITURE</p>	 	<p>Varun Bansal <i>Founder</i></p> <p>Chris Albes <i>Executive - Workplace Solutions & Sales</i></p>	 <p><i>MBE Certified Office Space Solutions and FF&E Company Over 1,000 projects completed Nationwide</i></p>
<p>PEST CONTROL</p>	 	<p>Richard Cappa <i>President</i></p> <p>Chris Blake <i>Director of Sales</i></p>	 <p><i>Servicing the NY Metro area since 1996 #1 Pest control company in NY & #54 in the Nation 170+ Employees</i></p>
<p>PHOTOLUMINESCENT MATERIALS SUPPLIER & INDUSTRY CONSULTANTS</p>		<p>Robert Katz <i>President</i></p>	 <p><i>Leading supplier of New York City building code-compliant photoluminescent egress path markings and signs. Established 2002</i></p>
<p>PHOTOGRAPHY <i>Corporate & Personal</i></p> <p>STRATEGIC PARTNER</p> 		<p>Robert Essel <i>Owner</i></p>	<p>ROBERT ESSEL PHOTOGRAPHY</p> <p><i>International Photography Healthcare - Corporate-Portraits-On-site Industrial-Sporting Events-Galas-Motion</i></p>
<p>PLUMBING CONTRACTOR</p>		<p>Yanni Likidis <i>President</i></p>	 <p>G.C. PLUMBING & HEATING, INC.</p>

<p>RECRUITMENT BPO & OFFSHORE EMPLOYMENT</p>	  	<p>Amylene Sy <i>Country Manager</i></p> <p>Cydrick Quijano <i>Senior Manager</i></p> <p>Mylene Celeste Balmores <i>Director of Executive Operations</i></p>	
<p>REAL ESTATE BROKERAGE <i>Commercial</i></p> <p>NY METRO/NATIONWIDE AND GLOBAL MARKETS</p>	 	<p>Robert Koppersmith <i>Executive Managing Director</i> <i>*IREON Executive Committee Member</i></p> <p>Jennifer Grgas <i>Director - Global Brokerage</i></p>	 <p><i>Servicing 60 Countries with 52000 employees in 400 offices</i></p>
<p>REAL ESTATE BROKERAGE <i>Investment</i></p> <p>Global "OFF-MARKET" transactions</p>		<p>Steve Kirschner <i>COO Licensed Broker Representative</i> <i>Founder, CEO IREON</i></p>	 <p><i>Boutique consultancy serving the high net-worth population.</i></p>

<p>REAL ESTATE LAW PRACTICE</p>	 	<p>Fernando Koatz <i>Founding Partner</i></p> <p>Kal Qubain <i>Partner</i></p>	 <p><i>Founded in New York City in 1990. Providing client-focused legal services to domestic and international entities and individuals.</i></p> <p><i>With strategic alliances with some of the most prestigious law firms in Europe, Middle East and Latin America, Gleason Koatz & Qubain offers the United States.</i></p>
<p>REAL ESTATE NEWS PUBLICATION</p> <p>STRATEGIC PARTNER</p> 		<p>Kristine Wolf <i>Publishing Director</i></p>	 <p><i>Servicing 35000 subscribers from Maine to Northern Virginia</i></p>
<p>RESIDENTIAL PROPERTY MANAGEMENT & CONSULTING</p>		<p>Marisa Kinsey <i>CEO</i></p>	<p><u>KINSEY EQUITIES LLC</u></p> <p><i>Established in 2008</i></p> <p><i>With over 15 years of boots-on-the-ground experience in New York City real estate. 200,000 multi-family units in the New York metro region and 30,000 multi-family buildings nationwide.</i></p>
<p>ROOFING</p> <p><i>Commercial & Residential</i></p>		<p>Frank Nicola <i>President</i></p>	 <p><i>Serving Nassau, Suffolk, Queens, Brooklyn, Bronx, New York and the Tri-State area for over 50 years</i></p>

STRATEGIC MARKETING
SOLUTIONS

STRATEGIC PARTNER



AJ Sonnick
CEO/Founder

**IREON Executive
Committee Member*



*"100 years combined" experience
Customized marketing solutions
National Diversified clients
"Start-ups to Fortune 500" enterprises*

TRUST & ESTATES AND ELDER
LAW PRACTICE



Ronald T. Alber
*Founder & Managing
Partner*



WEALTH ENHANCEMENT
PRESERVATION SAVINGS
"CUSTOMIZED"
TAX AND SUCCESSION
STRATEGIES
INDUSTRY LEADERS



Strategic Partner



Edward W. Gordon
Founder/President



Jordan M. Toder
Partner



Dan Toder
Manager



*Industry Leaders with Legal and Financial
knowledge required to leverage best
options to create customized strategies
and finance for wealth enhancement and
preservation.*

WEALTH MANAGEMENT



Strategic Partner



Christopher Michelsen
Founder



Investment management. Advisory. Capital market access.

IREON CONSULTANT
Capitalization



Strategic Partner



Raj Kashyap
Co-Founder and Managing Partner

